

## FEMALE BODY ARMOR MEASURING INSTRUCTIONS

**Read Carefully** before carefully before taking the following measurements

1. Have another person measure your torso
2. Please be accurate and be sure to complete all information.
3. **DO NOT OVER MEASURE.** Too big or too long will result in un-wearable armor
4. Wear proper attire when being measure (i.e.: T-shirt, style of bra worn on duty, service duty belt)
5. Do not hesitate to make special requests or comments.
6. Use a cloth measuring tape.

**Required Measurements (All fields must be completed)**

A. HEIGHT: \_\_\_\_\_ B. WEIGHT: \_\_\_\_\_ C. CUP SIZE: \_\_\_\_\_

**(1) CHEST BREADTH:**

DISTANCE BETWEEN THE ARMS (AT CHEST POINT LEVEL  
(ARMS OUT IN FRONT WITH A HANGER HELD BETWEEN THEM (8 to 9))

\_\_\_\_\_

**(2a) FULL CHEST/BUST**

(MEASURE THE MAXIMUM CIRCUMFERENCE OF THE CHEST  
AT THE MID-BREAST LINE (1 TO 1))

\_\_\_\_\_

**(2b) BUST WIDTH**

(MEASURE FROM BUST POINT TO BUST POINT 1 TO 6))

\_\_\_\_\_

**(2c) BUST COVERAGE**

(MEASURE DISTANCE FROM BUST POINT TO  
CENTER OF THE SIDE OF THE BODY (1 TO 7))

\_\_\_\_\_

**(3) UNDER CHEST/BUST**

(MEASURE THE CIRCUMFERENCE OF THE CHEST  
BELOW THE BUST)

\_\_\_\_\_

**(4) WAIST CIRCUMFERENCE**

(MEASURE AROUND THE WAIST AT THE WIDEST POINT (3 TO 3))

\_\_\_\_\_

**(5a) SIDE HEIGHT STANDING**

(MEASURE FROM THE CENTER OF THE SIDE OF THE BODY STARTING  
AT A PARALLEL FROM THE CHEST POINT (7 TO BELT))

\_\_\_\_\_

**(5b) TORSO HEIGHT**

(MEASURE DISTANCE FROM TOP OF SHOULDER TO BELT)

\_\_\_\_\_

**(6a) FRONT VERTICAL MEASUREMENT**

(MEASURE FROM THE "Y" AT THE TOP OF THE  
STERNUM/BREAST BONE (4 TO 5)  
TO THE TOP OF THE DUTY BELT)

STANDING

\_\_\_\_\_

**(8A) FRONT VERTICAL MEASUREMENT**

(MEASURE FROM THE "Y" AT THE TOP OF THE  
STERNUM/BREAST BONE (4 TO 5) TO THE TOP  
OF THE DUTY BELT)

SITTING

\_\_\_\_\_

**(6b) BUST HEIGHT**

(MEASURE FROM THE BUST POINT TO THE  
TOP OF THE DUTY BELT (1 TO 3))

STANDING

\_\_\_\_\_

**(8B) BUST HEIGHT**

(MEASURE FROM THE BUST POINT TO THE  
TOP OF THE DUTY BELT (1 TO 3))

SITTING

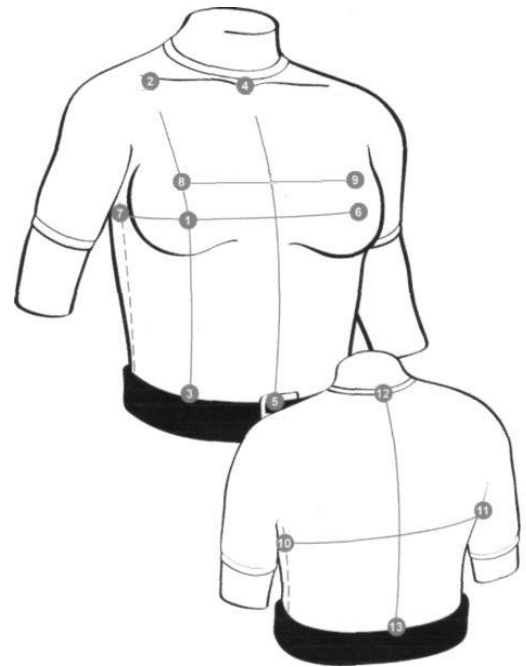
\_\_\_\_\_

**(7) BACK MEASUREMENT**

(MEASURE FROM THE BASE OF THE NECK  
WHERE THE PERTRUDING VERTEBRAE IS  
SEEN TO THE TOP OF THE DUTY BELT (12 TO 13))

STANDING

\_\_\_\_\_



**Circle level of protection required:** level II or level IIIA

Full Name: \_\_\_\_\_ Identification #: \_\_\_\_\_

Department: \_\_\_\_\_ Telephone NO.: ( ) \_\_\_\_\_

Shipping Address: \_\_\_\_\_

City: \_\_\_\_\_ Prov/State: \_\_\_\_\_ Postal Code/Zip \_\_\_\_\_